

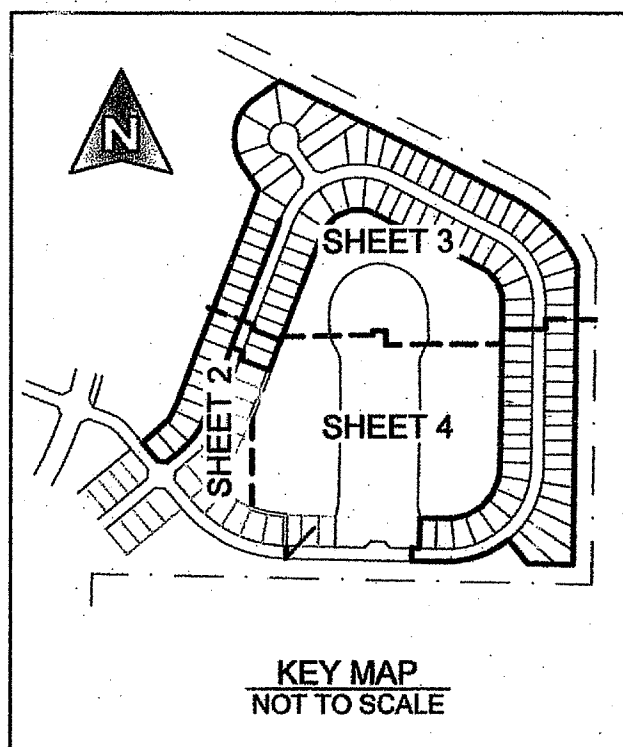
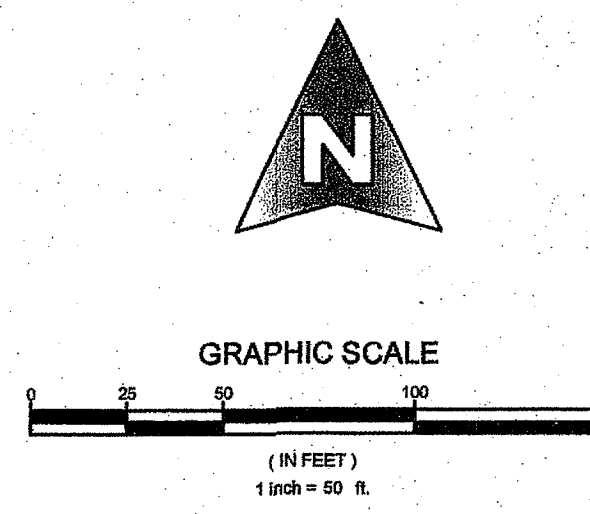
PORTOSOL REPLAT NO. 3

LYING IN SECTION 24, TOWNSHIP 43 SOUTH RANGE 41 EAST,
VILLAGE OF ROYAL PALM BEACH, PALM BEACH COUNTY, FLORIDA.
BEING A REPLAT OF PHASE - B2, PORTOSOL REPLAT NO. 2, AS RECORDED IN PLAT BOOK 115,
PAGES 127 THROUGH 132, PUBLIC RECORDS OF PALM BEACH COUNTY, FLORIDA,
AUGUST 20, 2012

- LEGEND:**
- D = DELTA (CENTRAL ANGLE)
 - L = LENGTH
 - R = RADIUS
 - CB = CHORD BEARING
 - CD = CHORD DISTANCE
 - PSM = PROFESSIONAL SURVEYOR AND MAPPER
 - PLS = PROFESSIONAL LAND SURVEYOR
 - PRM = PERMANENT REFERENCE MONUMENT
 - PCP = PERMANENT CONTROL POINT
 - LAE = LIMITED ACCESS EASEMENT
 - LME = LAKE MAINTENANCE EASEMENT
 - MREE = MAINTENANCE ROOF AND EAVES EASEMENT
 - UE = UTILITY EASEMENT
 - DE = DRAINAGE EASEMENT
 - OS = OPEN SPACE
 - WMT = WATER MANAGEMENT TRACT
 - (R) = RADIAL
 - (NR) = NON-RADIAL
 - PB = PLAT BOOK
 - ORB = OFFICIAL RECORD BOOK
 - PG = PAGE
 - P.B.C.U.E. = PALM BEACH COUNTY UTILITY EASEMENT
 - P.K. = PARKER KALON
 - SF = SINGLE FAMILY
 - = FOUND 4"x4" CONCRETE MONUMENT WITH ALUMINUM DISK STAMPED "PRM LB 4318"
 - ⊙ = SET 1/2" IRON ROD WITH ALUMINUM DISK STAMPED "SCHORAH AND ASSOCIATES PRM LB#2438"
 - = FOUND P.K. NAIL WITH DISK STAMPED "PCP LB 4318"
 - = SET P.K. NAIL WITH DISK STAMPED "PCP LB#2438"

103

COUNTY OF PALM BEACH)
STATE OF FLORIDA) SS
THIS PLAT WAS FILED FOR RECORD AT)
M. THIS DAY OF)
RECORDED IN PLAT BOOK NO.)
ON PAGE) THRU)
SHARON R. BOCK)
CLERK AND COMPTROLLER)
BY:) D.C.



CONSERVATION EASEMENT
(PER OFFICIAL RECORD BOOK 21861, PAGE 0001)

WATER MANAGEMENT TRACT No. 5 PORTOSOL PER PB 110, PAGES 37-48
NOT INCLUDED

TRACT B-3 PORTOSOL PER PB 110, PAGES 37-48
NOT INCLUDED

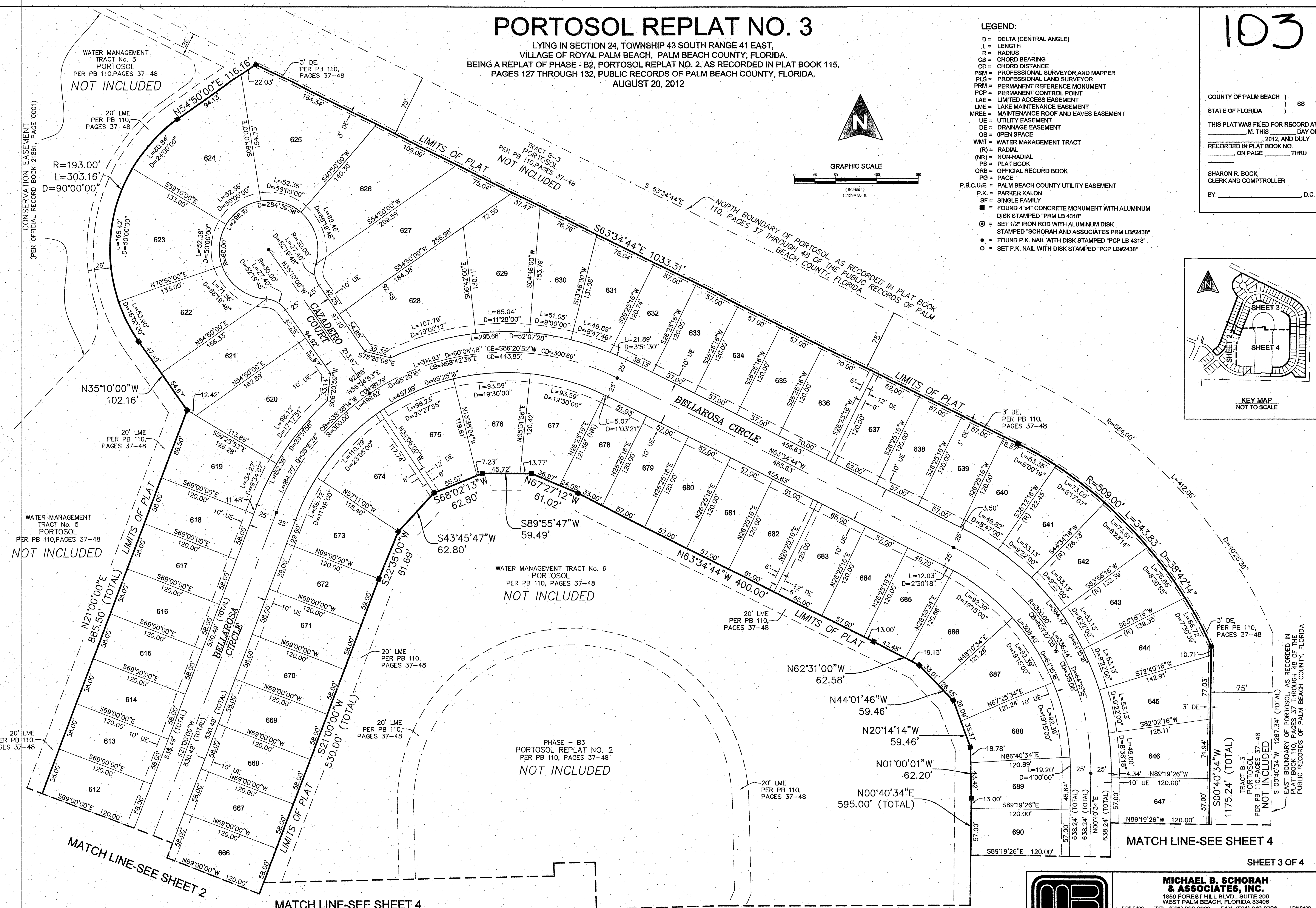
NORTH BOUNDARY OF PORTOSOL AS RECORDED IN PLAT BOOK 110, PAGES 37 THROUGH 48 OF THE PUBLIC RECORDS OF PALM BEACH COUNTY, FLORIDA

WATER MANAGEMENT TRACT No. 5 PORTOSOL PER PB 110, PAGES 37-48
NOT INCLUDED

WATER MANAGEMENT TRACT No. 6 PORTOSOL PER PB 110, PAGES 37-48
NOT INCLUDED

PHASE - B3 PORTOSOL REPLAT NO. 2 PER PB 110, PAGES 37-48
NOT INCLUDED

EAST BOUNDARY OF PORTOSOL AS RECORDED IN PLAT BOOK 110, PAGES 37 THROUGH 48 OF THE PUBLIC RECORDS OF PALM BEACH COUNTY, FLORIDA



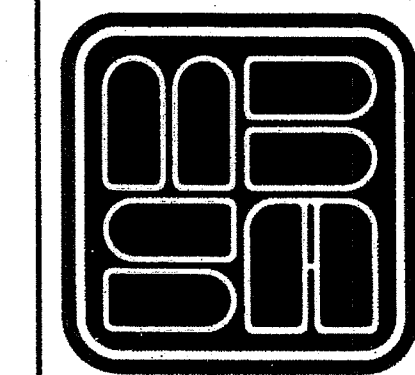
MATCH LINE-SEE SHEET 2

MATCH LINE-SEE SHEET 4

MATCH LINE-SEE SHEET 4

MATCH LINE-SEE SHEET 4

SHEET 3 OF 4



MICHAEL B. SCHORAH & ASSOCIATES, INC.
1850 FOREST HILL BLVD., SUITE 206
WEST PALM BEACH, FLORIDA 33406
E#B 2438 TEL. (561) 968-0080 FAX. (561) 642-9726 LB# 2438

PORTOSOL REPLAT NO. 3